

GENERAL INSTRUCTIONS AND CAUTIONS

Note: When welding, attach welder ground only to Hydra-Bed, not to truck frame. Use low-hydrogen rod or wire electrode. NEVER weld to the frame of the truck. Correct installation of the Level-Lok system assures Front to Rear and Side to Side leveling as well as Left to Right centering of the Hydra-Bed. Never obstruct factory overload spring mounting locations.

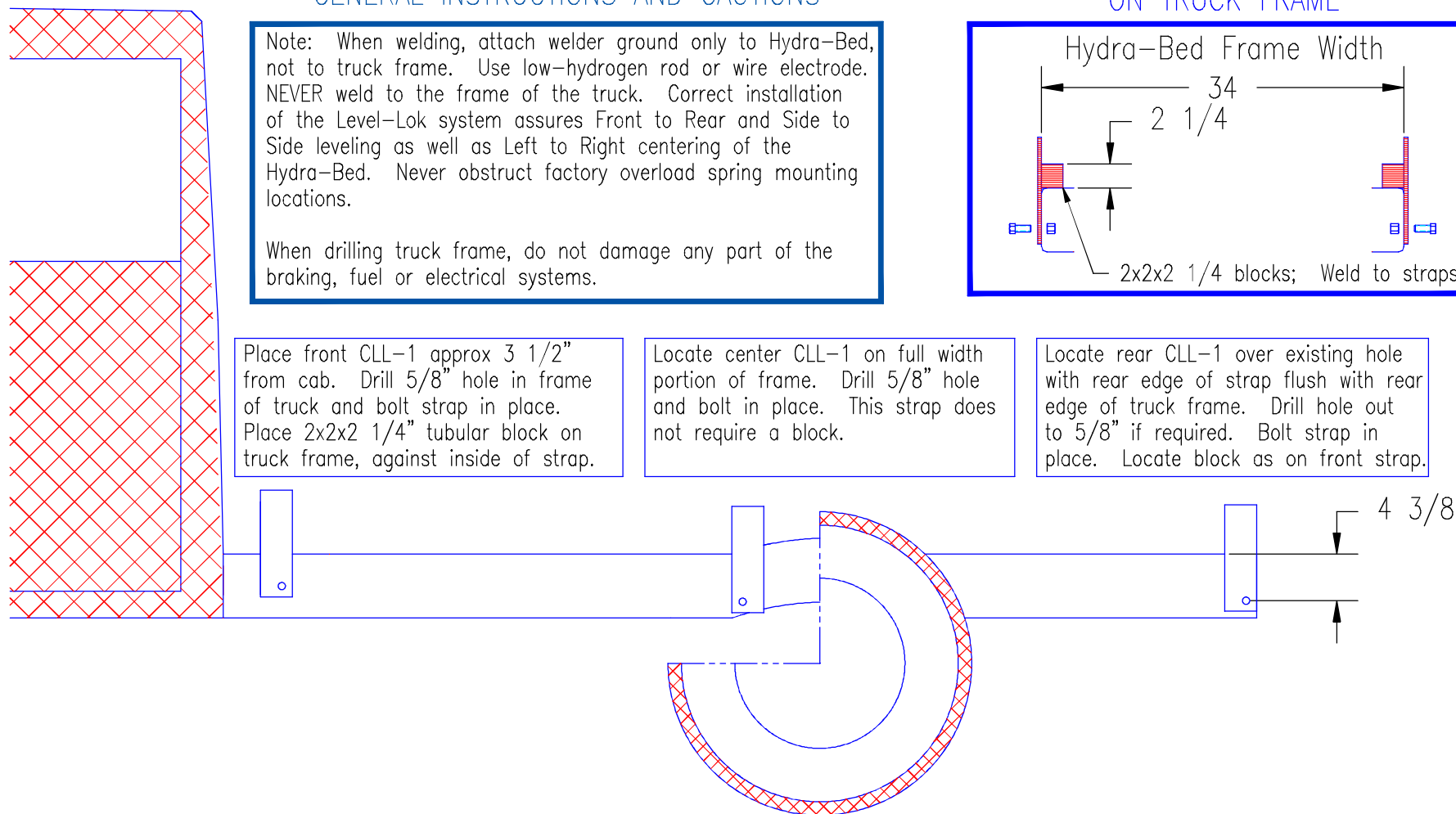
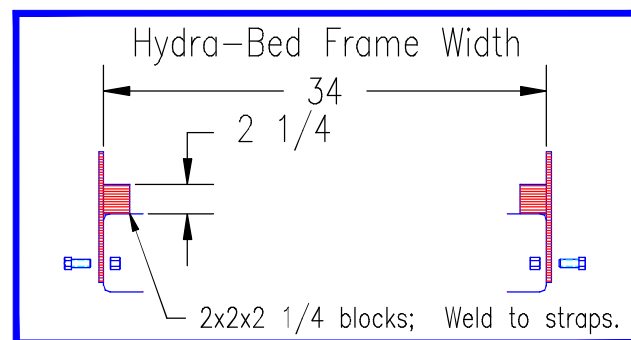
When drilling truck frame, do not damage any part of the braking, fuel or electrical systems.

Place front CLL-1 approx 3 1/2" from cab. Drill 5/8" hole in frame of truck and bolt strap in place. Place 2x2x2 1/4" tubular block on truck frame, against inside of strap.

Locate center CLL-1 on full width portion of frame. Drill 5/8" hole and bolt in place. This strap does not require a block.

Locate rear CLL-1 over existing hole with rear edge of strap flush with rear edge of truck frame. Drill hole out to 5/8" if required. Bolt strap in place. Locate block as on front strap.

VIEW OF FRONT & REAR LEVEL-LOKS ON TRUCK FRAME



CLL-1 1973-1987 Chevy/GMC Parallel 34" Frame
 56" Cab to Axle Single/Dual Wheel
 1973-1989 Chevy/GMC Parallel 34" Frame
 60" & 84" Cab to Axle Single/Dual Wheel

Kit contains 8 straps. Use 3 straps per side when mounting an HB 2X0 and 4 straps per side when mounting an HB 3X0 or longer Hydra Bed.